

03.09. / XIV / 2a

Bebauungsplan  
"Grubenloch"  
1. Änderung

12.03.1993 /  
16.08.1994

Ortsteil  
Apfelbach

1408

1405

1404

WA	I
03	03
-	E

SD 35°±5%

NORD

OST

SÜD

WEST

M 1:500

1410

290

285

280

1411

WA	II
03	05
-	E

SD 35°±5%

1396

1409

B

1402

C

A

C

1391/5

1391/4

1391/2

Gen. Baugr. v. 10.12.1964

226,340

Im Sommerrain

1391

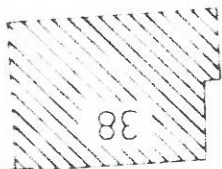
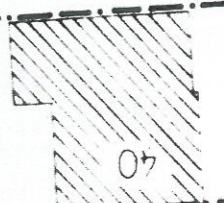
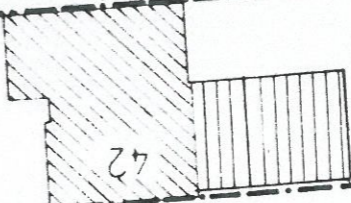
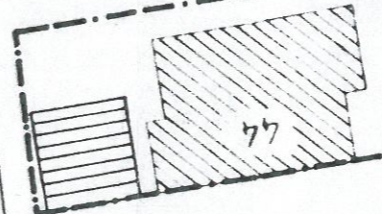
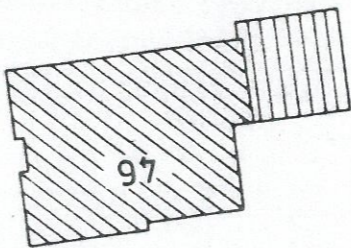
Gen. Baugr. v. 10.12.1964

275

270

WA	Bergs. I
03	Handst. 03 bzw. 05
o	DN 15x20°

1395/1



1412

131

Frühlingstraße